

INTERNATIONAL SOCIETY FOR BEHAVIORAL ECOLOGY NEWSLETTER

Vol. 2, No. 2.

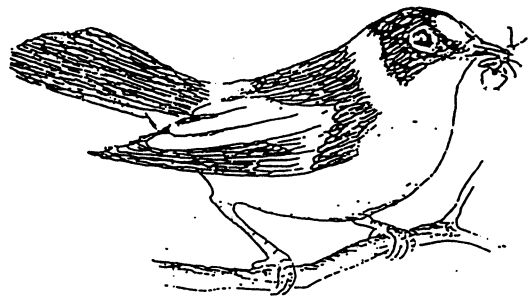
July 1989

Announcing the Society Journal Behavioral Ecology

THIRD INTERNATIONAL CONFERENCE OF BEHAVIOURAL ECOLOGY

Including a meeting with the Foraging Behaviour Group will take place in Uppsala, Sweden, on August 22 to 26, 1990. The first circular was mailed to ISBE members earlier this year. Anyone wishing to receive the 2nd circular (presently intended for distribution in September 1989) should return the relevant part of circular # 1 or otherwise contact local host:

Professor Staffan ULFSTRAND
Department of Zoology
Uppsala University
Box 561
S-751 22 Uppsala
SWEDEN



A Membership Notice

Society membership for 1989-1990 (up to the Uppsala meeting) has been assessed at US \$5. Dues can be paid by cheque or money order in the amount of US \$5 or Canadian \$6, payable to the "International Society for Behavioral Ecology", and sent to

Martin Daly, Treasurer of ISBE
Department of Psychology
McMaster University
Hamilton, Ontario L8S 4K1
Canada.

For those finding North American currencies inconvenient, we promised a Post-Giro account alternative, which is now available. People wishing to pay their society dues in this way are asked to remit 8.5 Swiss Francs to:

Swiss Post-Giro Account 30-17148-3 Bern
International Society for Behavioral Ecology

Member's Name

Anybody who has a banc-giro or post-giro account can transmit the money free of charge. Those who do not have such accounts can send the money from a bank or post office, but will be charged a fee. Whatever form you use to transmit your dues, please make sure that your name is entered on it, or we won't know whom to credit.

2

The New Journal of **Behavioral Ecology**: President's Statement

At the second meeting of the International Society for Behavioral Ecology in Vancouver in October 1988, members of the Society enthusiastically supported the proposal of launching a new Journal. A Journal Sub-committee of the International Executive, consisting of Linda Partridge, Randy Thornhill and myself, was assigned the job of getting the Journal launch under way. Our first task was to appoint Editors (The Executive Committee had decided that the Journal should have both a European and a North American Editor). We were fortunate enough to succeed in persuading two individuals with the ideal combination of editorial qualities (breadth, critical approach, attention to detail, great enthusiasm for the idea of a new journal), Don Kramer and Staffan Ulfstrand, to take on the task.

The next job was to negotiate with publishers. Some initial discussions had been undertaken by Larry Wolf in North America and myself in England, and these were carried forward by Don Kramer. We developed a statement of proposed scope and policy which is listed below. Several publishers showed strong interest in publishing our new Journal, but we have eventually settled on Oxford University Press (U.S.). We think that they will produce a Journal with a high quality finish at a reasonable price. Although OUP will own the Journal, copyright belongs to the Society, and the Society will retain control over editorial policy and have a say in any changes in production or pricing. Once the initial investment has been repaid by proceeds from the Journal, profits will be shared by OUP and the Society. The Journal will be published in 8 1/2 x 11 inch (21.5 x 28 cm) format, with each issue comprising 96 pages. Coated stock will permit black and white or color (at the author's expense) photographs to accompany articles. Two issues will be published in 1990 and four from 1991 on. There will be a different photo on the cover of each issue. Price will be \$35 U.S. plus postage and Society membership dues for each full year.

Meanwhile, the new Editors have been appointing Editorial Board members. The International Executive suggested that there should be a Board of up to twenty members

covering as wide as possible a range of subjects, taxonomic groups, and geographical areas.

The Journal, which will be called simply **Behavioral Ecology**, will be an important aspect of our Society's activities. It will not only publish high quality Papers with good refereeing and a short turn around time, but it will also represent the views of the Society in its editorial policy, it will be a forum for the Society's announcements, and it will be available to all members of the Society at a reasonable subscription price.

The first issue will appear in time for the Uppsala Meetings in August 1990. The Journal has been designed to meet your needs, I hope you will support it both by subscribing and by submitting good papers.

John R. Krebs
Oxford, July 1989

Behavioral Ecology: Scope and Policy

The new journal will cover both empirical and theoretical work in the field of behavioral ecology. The taxonomic scope will be very wide: manuscripts ranging from work on simple invertebrates through to man will be acceptable. Behavioral ecology will be construed in its broadest sense to include a) the use of ecological and evolutionary processes to explain the occurrence and adaptive significance of behavior patterns, b) the use of behavioral processes to predict ecological patterns such as the distribution and abundance of populations and the diversity of species, c) empirical, comparative analyses relating behavior to the environment in which it occurs. Areas of research to be covered by the journal include: foraging, antipredator, mating and parental care strategies, habitat selection, dispersal and migration, sexual selection, cooperation and conflict, communication, spacing and group behavior, mating systems and social organization. Closely related areas of morphology (e.g., sexual dimorphism), life history (e.g., parental investment) and plant ecology (e.g., pollination biology) could be included.

Behavioral Ecology: A Note From the Editors

We are honored to have been asked to serve the ISBE as founding editors of **Behavioral Ecology** and promise to do our best to meet the Society's goal of a high quality, affordable journal that will promote the growth and maturation of our field by drawing together the scattered literature of our rapidly growing discipline.

This task is not one that we can undertake alone, but one in which we require the participation of the entire membership in several ways. First, the success of the journal will depend on the degree to which it reflects the developing needs of the research community. For this we need input; innovations are probably most easily put into place at the founding event in which we now find ourselves. How can scientific communication in our field be improved?

Second, no journal can succeed without numerous, high quality contributions. We have assured the publisher that there is no shortage of high quality research in our field. The membership must be prepared to submit such work to the new journal in order to start the positive feedback loop in which the publication of interesting and important papers promotes increased use and subscriptions which in turn promotes increased rates and quality of papers submitted. In order to be ready with the first issue in time for the August 1990 Uppsala meeting, this is the first call for papers. We will accept as articles original contributions of any length: theory, data, methodology or novel syntheses of published work. The Society has demanded a journal using a very broad definition of behavioral ecology, and we hope to be able to cover this entire field. The capacity for black-and-white photos (or color at authors' expense) offers considerable new opportunities for the communication of some types of research. **Behavioral Ecology** will also contain a section in which novel ideas or questions can be proposed, interesting observations noted, or previously published work can be discussed. Finally, we would like to receive some high quality photographs, color or black-and-white, of animals behaving ecologically, that could be used as cover illustrations.

3

Manuscripts (in triplicate) from North and South America should be sent to Dr. Kramer, manuscripts from Europe and Asia to S. Ulfstrand at the addresses given below. Pending decisions on the details of format, authors may follow the stylistic conventions of any major journal in behavior or ecology. English (U.S. spelling conventions) will be the language of publication. There will be no page charges, but some costs will be met by a charge for reprints.

The third contribution of the membership will be to the process of refereeing. In order to succeed, our journal must have prompt, fair, critical and constructive refereeing. In order to share this important duty among the community a call for referees will be put in a later communication.

Finally, unless the subscription list is large, the journal cannot succeed, no matter how excellent the published material. Keeping the cost down for both individuals and institutions demands a large base. Subscriptions will be solicited in a later mailing to members and through advertising by Oxford University Press. Please subscribe and encourage your colleagues and libraries to do so as well.

We are looking forward to your collaboration in this exciting venture.

Prof. Staffan ULFSTRAND
Department of Zoology
Uppsala University
Box 561
S-751 22 Uppsala
SWEDEN

Tel. +46-18-18-26-76 (-25 office)
FAX +46-18-559-888

Dr. Donald L. KRAMER
Department of Biology
McGill University
1205 Avenue Docteur Penfield
Montreal, Quebec, H3A 1B1
CANADA

Tel. +1-514-398-6466 (-6472 messages)
FAX +1-514-398-5069

Some Other Future Meetings of Interest

International Ethological Congress XXI. Utrecht, the Netherlands.

August 9-17, 1989.

For information, contact:

XXIst International Ethological Congress
c/o QLT Convention Services
Keizersgracht 792
1017 EC Amsterdam
The Netherlands

First Annual Meeting of the Human Behavior & Evolution Society. Evanston, USA. August 25-27, 1989.

For information, contact:

William Irons
Department of Anthropology
Northwestern University
Evanston IL 60208
U.S.A.
Tel.: 312-491-5402

European Society of Evolutionary Biology. 2nd Congress. Rome, Italy. September 25-29, 1989.

For information, contact:

Prof. Valerio Sbordoni
Dipartimento di Biologia
Il Università di Roma "Tor Vergata"
Via Orazio Raimondo - La Romanina
I-00173 Roma
Italy

XIVe Congrès de la Société Québécoise pour l'Etude Biologique du Comportement. "Les Stratégies Reproductrices." Duchesnay, Canada. October 27-29, 1989.

For information, write:

Gilles Gauthier
Département de Biologie
Université Laval
Sainte-Foy, Quebec G1K 7P4
Canada

Northeast Regional Meeting of the Animal Behavior Society. Providence, USA. November 10-12, 1989.

For information, write:

Jonathan Waage
Program in Ecology & Evolutionary
Biology
Brown University
Providence RI 02912
U.S.A.

Association for the Study of Animal Behaviour.

1. London, U.K. December 7-8, 1989. "Sexual selection".

For information, write:

Tim Halliday
Biology Department, Walton Hall
The Open University
Milton Keynes MK7 6AA
U.K.

2. Guildford, U.K. March 21-23, 1990.

For information, write:

Joe Crocker
Ministry of Agriculture &c
ADAS Research & Development Service
Worpleston Laboratory
Tangley Place
Worpleston GU3 3LQ
U.K.

3. Belfast, N. Ireland. July 25-27, 1990. "Conflict & cooperation."

For information, write:

Bob Elwood
Department of Biology
The Queen's University of Belfast
Northern Ireland
Tel.: 0232-661111, ext. 4155

Centennial Meeting of the American Society of Zoologists. Boston, USA. December 27-30, 1989.

For information, write:

Mary Adams-Wiley
104 Sirius Circle
Thousand Oaks CA 91360
U.S.A.
Tel.: 805-492-3585

Seventh Biennial Conference on the Ecological and Evolutionary Ethology of Fishes. Flagstaff, USA. May 19-23, 1990.

For information, write:

Dr. W. Linn Montgomery
Department of Biological Sciences
Northern Arizona University
Flagstaff AZ 86011-5640
U.S.A.
Tel: 602-523-7505 or 602-523-2381

This is a list of meetings of which I happen to have been notified. Please help me to help you stay informed, by sending notices of interest to ISBE members to:

Martin Daly
Department of Psychology
McMaster University
Hamilton, Ontario L8S 4K1
Canada.